



## ENGINEERING SERVICES

**Since 1913**, with over 100 years of proven performance, our Engineering Services line of business has the knowledge and experience to provide turnkey solutions. From conception, throughout execution, our project delivery process can guarantee a successful partnership, while leading the industry in safety and quality. As a family-owned business, our people are our greatest asset. Through our proven process and guarantee, we will meet your expectations.

### We provide solutions to:

- Commercial
- Institutional
- Industrial
- Municipal
- Education
- Pharmaceutical
- Government
- Renewables
- Healthcare
- Utility

### We specialize in the following Engineering Services:

Lighting & Power

Telecommunications,  
Fire, Life Safety & Security

Short Circuit, Arc Flash & Load Flow

Substations    OH & UG Distribution

Design Build & Value Engineering

Renewable & Distributed Energy

Commissioning, Testing & Diagnosis

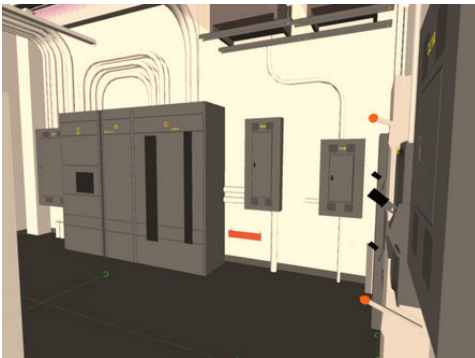
### SERVING:

The Mid-Atlantic &  
New England  
Regions



## Studies

- Feasibility Studies
- Site Surveys
- Budgeting
- Project Planning
- Energy Audits
- Equipment Assessment & Evaluation
- Power Quality Studies & Analysis
- Ground Grid Studies & Analysis
- Lightning Protection
- Incentive & Rebates (Lighting, Motor Drive & Demand)



## Engineering

- Low & Medium Voltage Systems
- Interior & Exterior Lighting & Controls
- Arc Flash / Short Circuit / Load Flow
- Protective Device Coordination
- Emergency & Backup Systems
- Structured Cabling & Fiber
- Fire / Security / CCTV / Sound Systems
- Relay & Device Settings
- Substations & Equipment
- Renewable Energy (Solar & Wind Farms)
- Battery Storage Systems
- Radio & Cellular Networks

## Services

- Bid Documents
- Permit Drawings
- Utility Interconnect Coordination
- Construction Administration
- Design / Build
- Design Assist
- Value Engineering
- Equipment Acceptance & Commissioning
- Equipment Testing & Diagnostics
- Emergency Response

### FULL LINE OF I.B. ABEL SERVICES:

ELECTRICAL | COMMUNICATION | AUTOMATION | ENGINEERING  
TRANSMISSION | DISTRIBUTION | SUBSTATION

**24/7 SERVICE & SUPPORT**